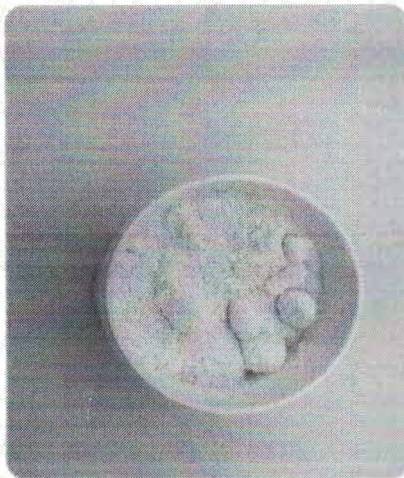




Orders #: 78095
 Order Name: 26889
 Batch #: P130085
 Complete: 06/04/2021

Super Sensus Hemp Co



Cannabinoids

	LOQ	weight%	mg/g
D9-THC	< 0.05%	B/LOQ	< 0.12
THCA	< 0.05%	N/D	N/D
CBD	< 0.05%	< 27.76%	< 277.60
CBDA	< 0.01%	N/D	N/D
CBDV	< 0.01%	< 0.12%	< 1.19
CBC	< 0.01%	< 0.01%	< 0.09
CBN	< 0.01%	N/D	N/D
CBG	< 0.01%	< 1.61%	< 16.07
CBGA	< 0.01%	N/D	N/D
D8-THC	< 0.05%	N/D	N/D
THCV	< 0.05%	N/D	N/D
TOTAL D9-THC	N/A	< 0.01%	< 0.12
TOTAL CBD*	N/A	< 27.76%	< 277.60
TOTAL CANNABINOIDS	N/A	< 29.51%	< 295.08

N/D
D9-THC

27.76%
Total CBD

Metal

	Action Level	Result
ARSENIC (AS)	200	B/LOQ
CADMIUM (CD)	200	B/LOQ
MERCURY (HG)	100	B/LOQ
LEAD (PB)	500	B/LOQ

Limit of Quantitation (LOQ) is 85 ppb

Residual Solvents

	Action Level	Results	LOQ
1,1-DICHLOROETHENE	5	N/D	0
1,2-DICHLOROETHANE	2	N/D	0
ACETONE	5,000	N/D	280
ACETONITRILE	410	N/D	50
BENZENE	1	N/D	1
BUTANE	5,000	N/D	100
CHLOROFORM	1	N/D	1
CIS 1,2-DICHLOROETHENE	5	N/D	0
ETHANOL	5,000	N/D	280
ETHYL ACETATE	5,000	N/D	280
ETHYL ETHER	5,000	N/D	280
ETHYLENE OXIDE	1	N/D	0
ISOPROPYL ALCOHOL	5,000	N/D	280
METHANOL	3,000	N/D	200
METHYLENE CHLORIDE	125	N/D	0
N-HEPTANE	5,000	N/D	280
N-HEXANE	290	N/D	36
PENTANE	5,000	N/D	280
PROPANE	5,000	N/D	40
TOLUENE	890	N/D	106
TRANS 1,2-DICHLOROETHENE	5	N/D	0
TRICHLOROETHENE	1	N/D	0
XYLENES	150	N/D	260

Pesticide Name

	Action Level	Results	LOQ
ABAMECTIN B1A	0.100	N/D	0.02
ACEPHATE	0.100	N/D	0.004
ACEQUINOCYL	0.100	N/D	0.004
ACETAMIPRID	0.100	N/D	0.02
ALDICARB	0.100	N/D	0.02
AZOXYSTROBIN	0.100	N/D	0.004
BIFENAZATE	0.100	N/D	0.02
BIFENTHRIN	3.000	N/D	0.02
BOSCALID	0.100	N/D	0.02
CARBARYL	0.500	N/D	0.012
CARBOFURAN	0.100	N/D	0.004
CHLORANTRANILIPROLE	10.000	N/D	0.02
CHLORPYRIFOS	0.100	N/D	0.004
CLOFENTEZINE	0.100	N/D	0.004
DAMINOZIDE	0.100	N/D	0.02
DIAZANON	0.100	N/D	0.004
DICHLORVOS	0.100	N/D	0.02
DIMETHOATE	0.100	N/D	0.004
DIMETHOMORPH	2.000	N/D	0.02
ETHOPROPHOS	0.100	N/D	0.004
ETOFENPROX	0.100	N/D	0.004
ETOXAZOLE	0.100	N/D	0.04
FENHEXAMID	0.100	N/D	0.02
FENOXYCARB	0.100	N/D	0.02
FENPYROXIMATE	0.100	N/D	0.004
FIPRONIL	0.100	N/D	0.012
FLONICAMID	0.100	N/D	0.05
FLUDIOXONIL	0.100	N/D	0.012
HEXYTHIAZOX	0.100	N/D	0.02

Pesticide Name

	Action Level	Results	LOQ
IMAZALIL	0.100	N/D	0.02
IMIDACLOPRID	5.000	N/D	0.02
KRESOXIM-METHYL	0.100	N/D	0.04
MALATHION	0.500	N/D	0.02
METALAXYL	2.000	N/D	0.004
METHIOCARB	0.100	N/D	0.02
METHOMYL	1.000	N/D	0.004
MEVINPHOS	0.100	N/D	0.004
MYCLOBUTANIL	0.100	N/D	0.02
NALED	0.100	N/D	0.02
OXAMYL	0.500	N/D	0.004
PACLOBUTRAZOL	0.100	N/D	0.02
PERMETHRINS	0.500	N/D	0.02
PHOSMET	0.100	N/D	0.02
PRALLETHRIN	0.100	N/D	0.02
PROPICONAZOLE	0.100	N/D	0.04
PRGPOXUR	0.100	N/D	0.004
PYRETHRINS (PYRETHRIN I)	0.500	N/D	0.02
PYRIDABEN	0.100	N/D	0.02
SPINETORAM	0.100	N/D	0.004
SPINOSAD	0.100	N/D	0.004
SPIROMESIFEN	0.100	N/D	0.02
SPIROTETRAMAT	0.100	N/D	0.004
SPIROXAMINE	0.100	N/D	0.004
TEBUCONAZOLE	0.100	N/D	0.02
THIACLOPRID	0.100	N/D	0.004
THIAMETHOXAM	5.000	N/D	0.004
TRIFLOXYSTROBIN	0.100	N/D	0.004

Cannabinoids

Delta-9-Tetrahydrocannabinol 1%	Pass
Tetrahydrocannabinolic Acid 0%	Pass
Cannabinoids 25%	Pass
Cannabinolic Acid 0%	Pass
Cannabidiol 1%	Pass
Cannabichromene 1%	Pass
Cannabinol 0%	Pass
Cannabigerol 2%	Pass
Cannabigerolic Acid 0%	Pass
Delta-8-Tetrahydrocannabinol 0%	Pass
Tetrahydrocannabivarin 0%	Pass

Microbials

	Allowable Criteria	Actual Result	Pass/Fail
Aspergillus Fumigatus***	DETECT/NOT DETECTED	NOT DETECTED	Pass
Aspergillus Terreus***	DETECT/NOT DETECTED	NOT DETECTED	Pass
Aspergillus Flavus***	DETECT/NOT DETECTED	NOT DETECTED	Pass
Aspergillus Niger***	DETECT/NOT DETECTED	NOT DETECTED	Pass
STEC E. Coli*	DETECT/NOT DETECTED	NOT DETECTED	Pass
Salmonella*	DETECT/NOT DETECTED	NOT DETECTED	Pass
Total Yeast and Mold	1,000 CFU/G	NOT DETECTED	Pass
Aerobic Bacteria Count	10,000 CFU/G	NOT DETECTED	Pass
Enterobacteriaceae	100 CFU/G	NOT DETECTED	Pass
Coliform	100 CFU/G	NOT DETECTED	Pass

Andrew Hall
 Dr. Andrew Hall, Ph.D.,
 Chief Scientific Officer

Ben Witten
 Ben Witten, MS, MT,
 Lab Director

Green Scientific Labs
 info@greenscientificlabs.com
 1-833-TEST-CBD



N/D: Not Detected
 B/LOQ: Below Limit of Quantification